



Engine	Cummins X15
Max Gross Power	432 kW (580 hp / 587ps) @ 1,800 rpm
Max Net Power	411 kW (552 hp / 559 ps) @ 1,800 rpm
Operating Weight	52,000 kg
Standard Bucket Size	7.0 m ³
Standard Breakout Force	393 kN
Standard Dump Clearance	3,915 mm

8128H WHEEL LOADER

TOUGH WORLD. TOUGH EQUIPMENT.

8128H SPECIFICATIONS >>>

ENGINE

Emission Regulation	Stage V
Make	Cummins
Model	X15
Max Gross Power	432 kW (580 hp / 587ps) @ 1,800 rpm
Max Net Power	411 kW (552 hp / 559 ps) @ 1,800 rpm
Peak Torque	2,644 N·m (1950 lbf · ft) @ 1,400 rpm
Displacement	15 L
Number of Cylinders	6
Aspiration	Turbocharged & Air-to-air intercooled

TRANSMISSION

Transmission Type	Countershaft, power shift
Torque Converter	Single stage, three elements
Maximum Travel Speed, fwd	36.9 km/h
Maximum Travel Speed, rev	36.9 km/h
Number of Speeds, fwd	4
Number of Speeds, rev	4

AXLES

Differential Front Type	Limited slip
Differential Rear Type	Limited slip
Axle Oscillation	± 12°

STEERING

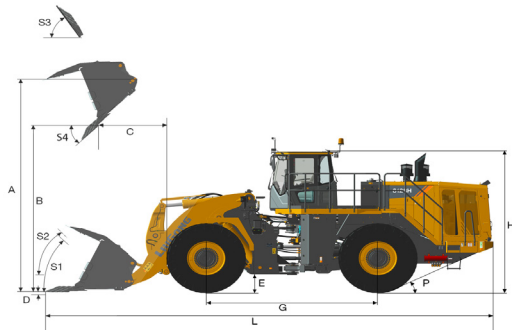
Steering Configuration	Articulated
Steering System	Piston pump
Steering Operation	Wheel + Joystick
Steering Relief Pressure	21 MPa

BRAKES

Service Brake Type	Wet discs brake
Service Brake Actuation	Hydraulic
Parking Brake Type	Disc
Parking Brake Actuation	Hydraulic

HYDRAULIC SYSTEM

Main Pump Type	Piston
Main Relief Pressure	26 MPa
Raise	8.5 s
Dump Time	2.1 s
Float Down Time	4.0 s
Fastest Total Cycle Time	14.6 s



LOADER ARM PERFORMANCE WITH STANDARD BUCKET 7.0 m³

Tipping Load - Straight (ISO 14397-1:2007)	39,000 kg
Tipping Load - Full Turn (ISO 14397-1:2007)	32,000 kg
Bucket Breakout Force	393 kN
A Maximum Hinge Pin Height	5,649 mm
B Dump Clearance at Full Height Discharge	3,910 mm
C Dump Reach at Full Height Discharge	2,050 mm
D Maximum Digging Depth, Bucket Level	137 mm
S ₁ Bucket Rollback at Ground Level	43°
S ₂ Bucket Rollback at Carry	49°
S ₃ Bucket Rollback at Maximum Height	56°
S ₄ Maximum Dump Angle at Full Height	45°

BUCKET PERFORMANCE

Reference Bucket	6.0-12.0 m³
------------------	-------------

DIMENSIONS

E Ground Clearance	480 mm
G Wheelbase	4,550 mm
H Cab Height	4,200 mm
J Wheel Tread	2,700 mm
K Width Over Tires	3,590 mm
L Length with Bucket Down	11,890 mm
M Turn Angle, Either Side	43°
P Rear Angle of Departure	25°
R ₁ Turning Radius, Bucket Carry	8,530 mm
R ₂ Turning Radius, Outside of Tire	7,620 mm
W Width Over Bucket	3,810 mm

TIRES

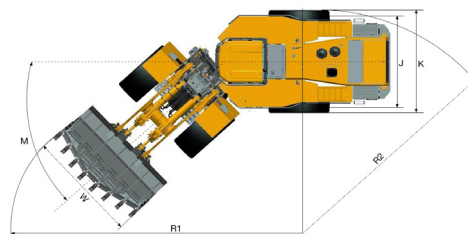
Tire Size	35-65R33
-----------	----------

OPERATING WEIGHTS

Operating Weight	52,100 kg
------------------	-----------

SERVICE CAPACITY

Fuel Tank	667 L
Engine Oil	42 L
Cooling System	95 L
Hydraulic Reservoir	420 L
Transmission and Torque Converter	230 L
Axles, each	115 L



Guangxi Liugong Machinery Co., Ltd.

No. 1 Liutai Road, Liuzhou, Guangxi 545007, PR China
T: +86 772 3886124 E: overseas@liugong.com
www.liugong.com

Specifications and designs are subject to change without notice. Machines shown may include optional equipment. Liugong standard and optional equipment may vary from region to region. Please consult your Liugong dealer for information specific to your area. Engine power kW is converted to horsepower (1 kW=1.3596 ps and 1 kW=1.3410 hp) in this file.

03/2023 Designed by LiuGong